

# jddd

<http://jddd.desy.de>



Tango Meeting - ALBA, 16-17 October 2008

ELETTRA: tests and impressions with jddd

**Component Inspector**

EditorPanel

- TabbedPane1
  - Tab0
    - IncludeComponent
    - If7
    - If6
    - Icon1
    - CheckBox1
    - Label1
    - IncludeComponent
    - IncludeComponent
    - IncludeComponent
    - IncludeComponent
    - If5
    - If4
    - Button6
    - IncludeComponent
    - Button1
    - Button5
    - Button4
    - IncludeComponent
    - IncludeComponent
    - IncludeComponent
    - IncludeComponent
    - Line5
    - Button3
    - Value1
    - Button2

**Component Palette**

- Pane Components
  - LayeredPane
  - TabbedPane
    - Tab
  - IncludeComponent
  - DynamicList
- Static Components
  - Label
  - Line
  - Oval
  - Rectangle
  - Triangle
  - Icon
- Dynamic Components
  - Button
  - Value

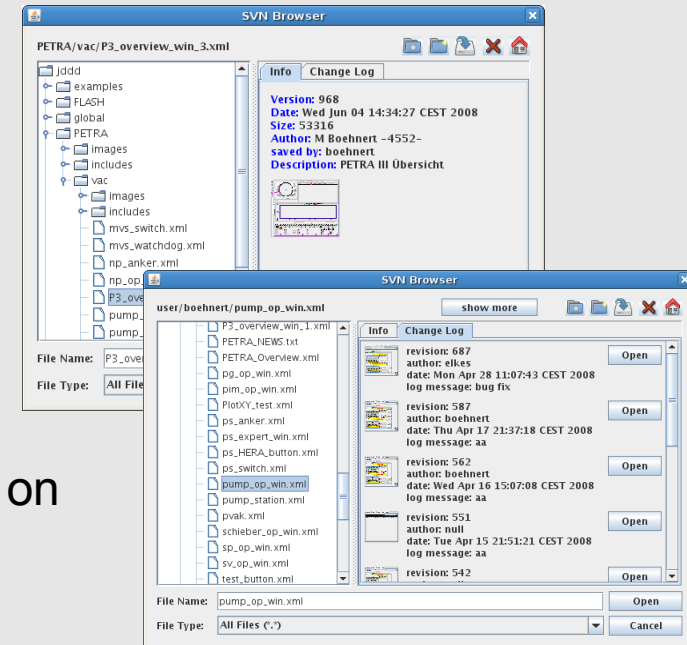
**Button1 - Properties**

Property	Value
name	Button1
function	New Window
text	Laser
textColor	[51,51,51]
textFont	Dialog,1,12
button...	[238,238,238]
button...	
button3D	<input checked="" type="checkbox"/>
icon	
adr	



# light

- It is used the Java Web Start technology:
  - It can be accessed from everywhere web connected
  - It ensures the most current version of the application will be deployed
- Central SVN repository, with effective browser
- Reuse of components
  - A *widgets* may be used as generic library components and may be added and reused on other jddd panels: changing the original component changes all its clones
- Layers
- and some others:
  - Location chooser: It can change the base address of the whole panel
  - Logic components: if, switch
  - Audio & video components



the browser

# shadow

- JAVA (there is some one that do not love this wonderful language ;-)
- Look and Feel
  - Different from Qt
  - Low quality
- Synoptic
  - It does not offer some useful designer features, e.g.: connectors between neighboring end points

# extension

